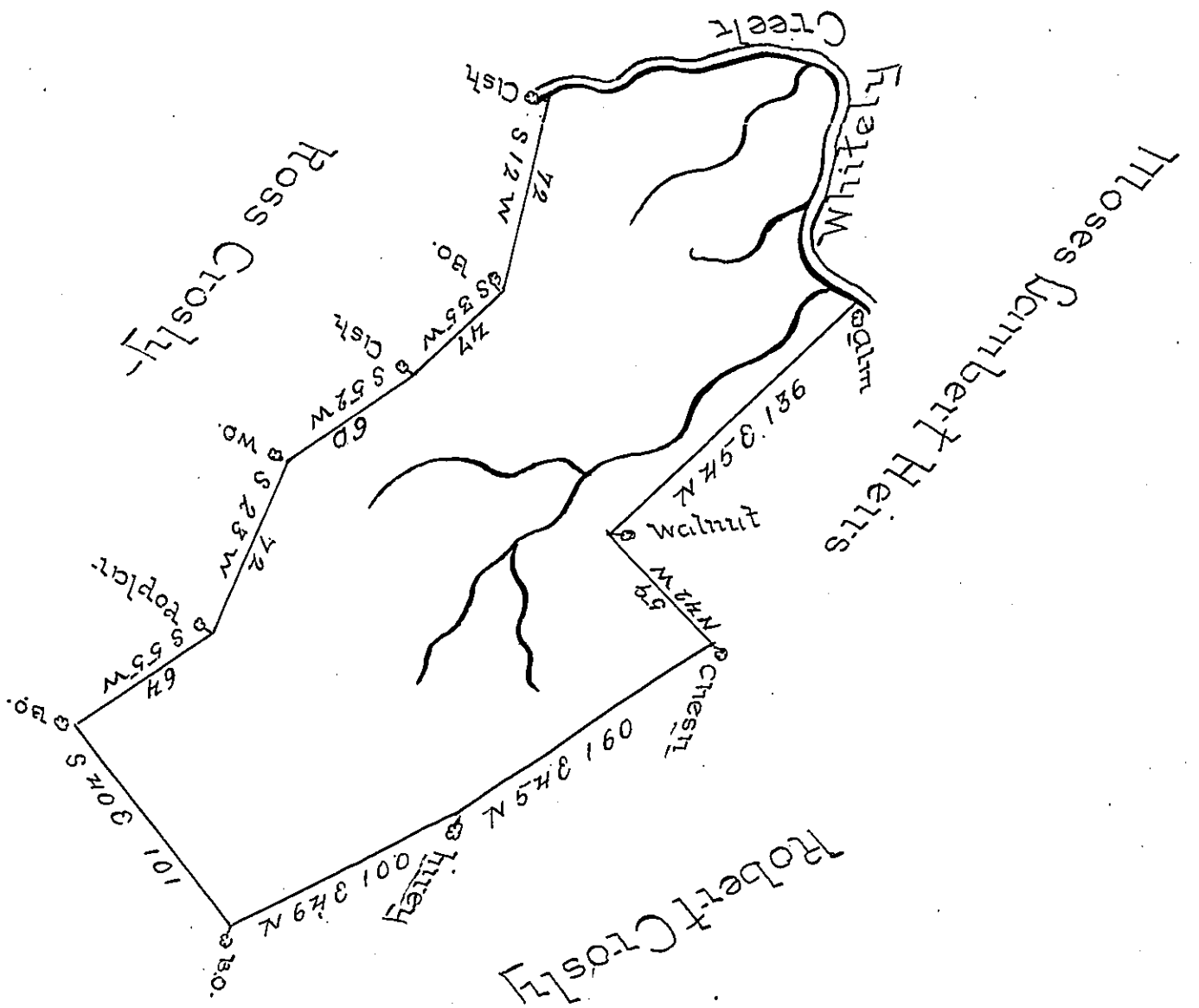


Courses and Distances  
up the Creek

N 63 W 24  
N 13 E 83  
N 79 W 28  
S 76 W 140



The above is a Draught of a Survey made December 15<sup>th</sup> 1785 in pursuance of a Warrant granted Joseph Frazer Dated October 28<sup>th</sup> 1785 Called Saw Mill Containing 313 Acres and 112 With 6<sup>th</sup> Cent Allowance and is Situate in Washington County Green Township

David Redick D.S.

To John Lukens Esq: Secy.

IN TESTIMONY that the above is a copy of the original remaining on file in the Department of Internal Affairs of Pennsylvania, made conformably to an Act of Assembly approved the 16th day of February, 1833, I have hereunto set my Hand and caused the Seal of said Department to be affixed at Harrisburg, this fifth day of December 1899.

*James W. Latta*  
Secretary of Internal Affairs.